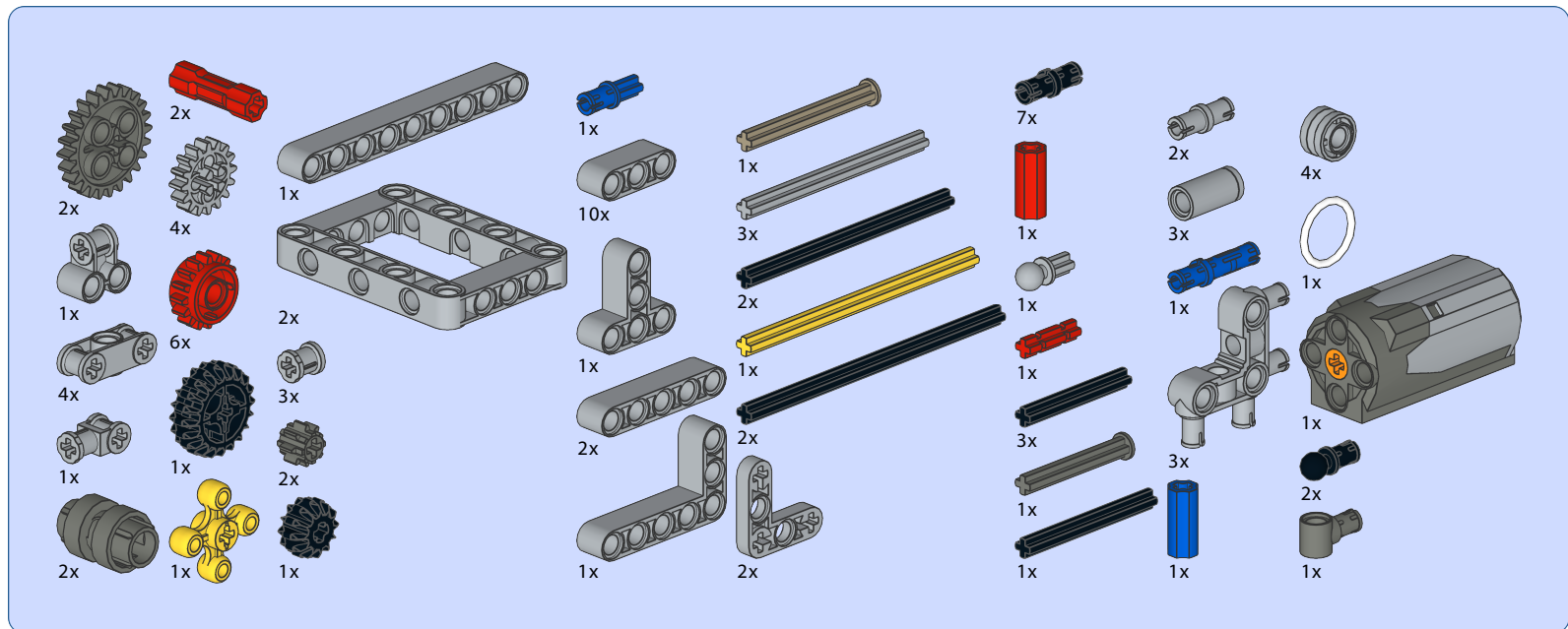
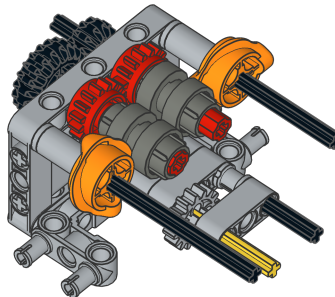
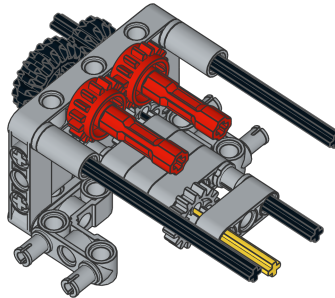
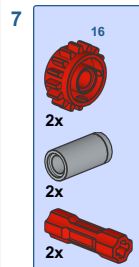
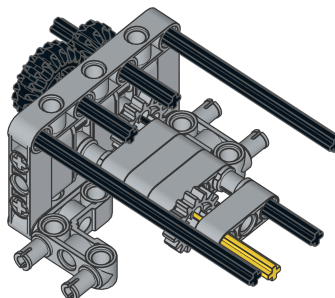
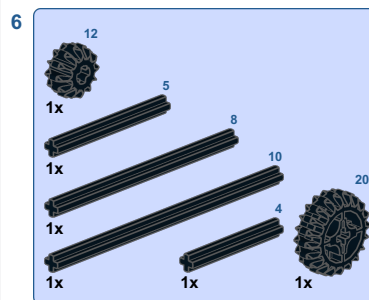
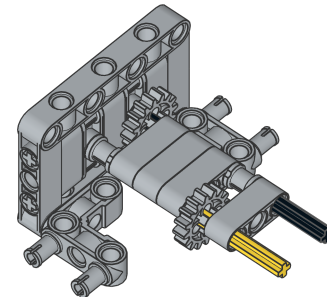
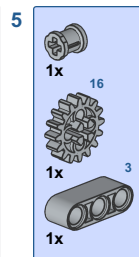
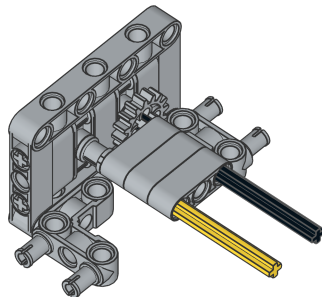
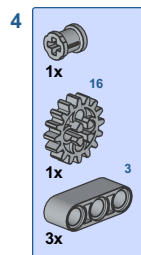
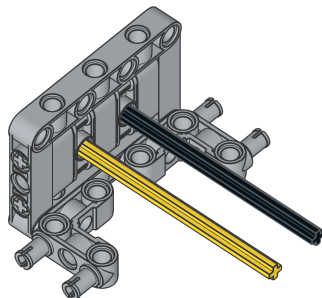
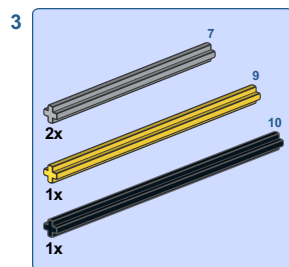
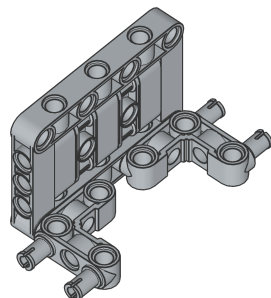
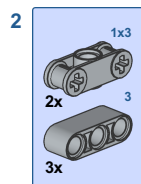
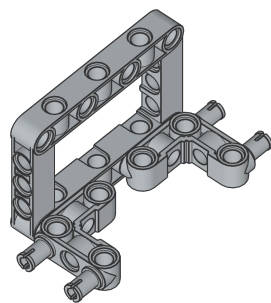
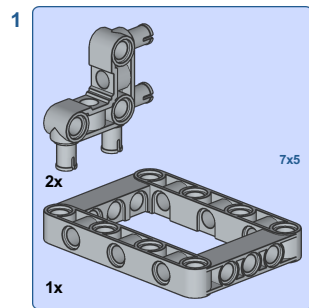
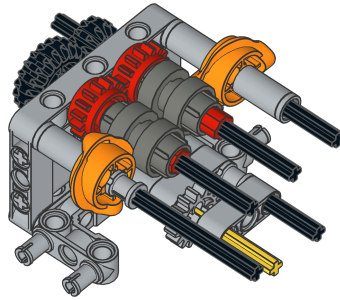
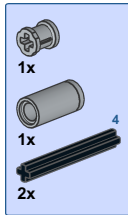


The parts list. Additionally, you need two rotary transmission catches from the LEGO Bugatti Chiron set (part number 35188).

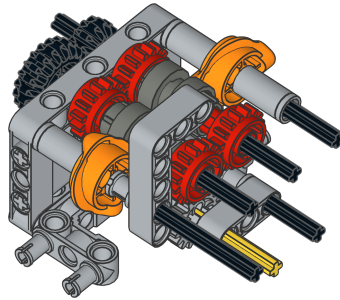
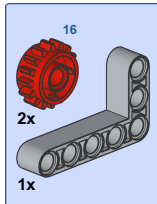




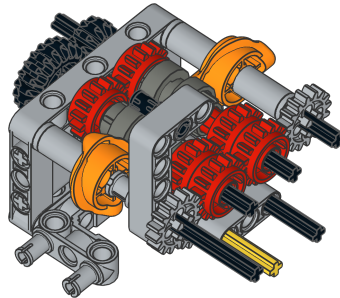
9



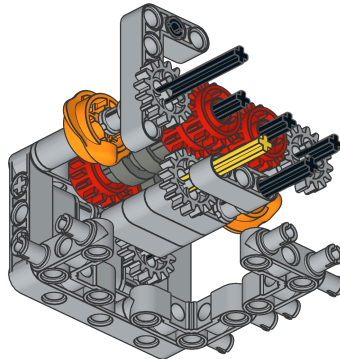
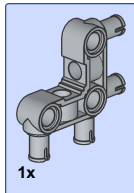
10



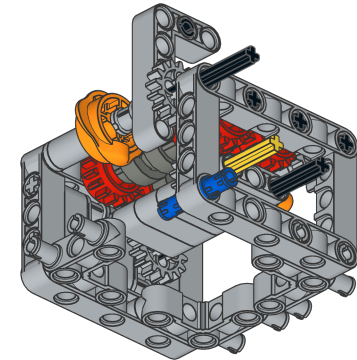
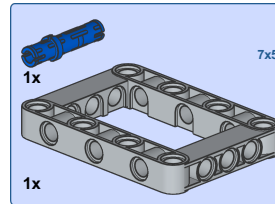
11



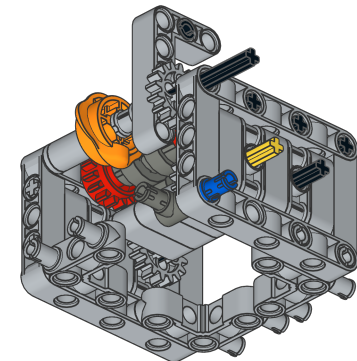
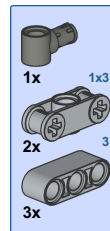
12



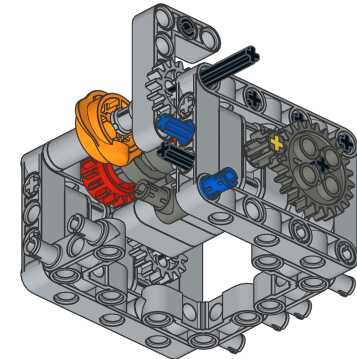
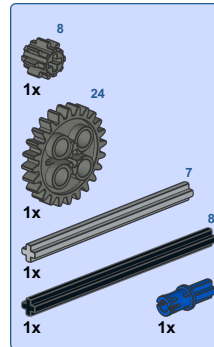
13

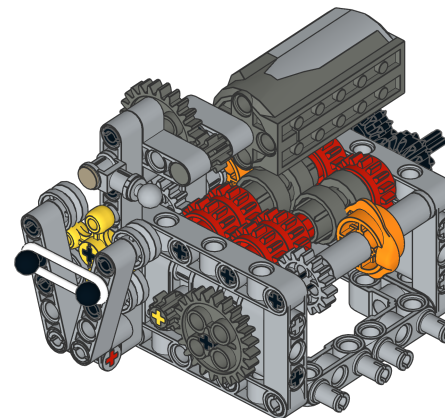
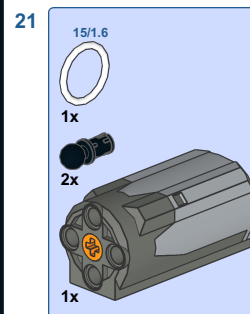
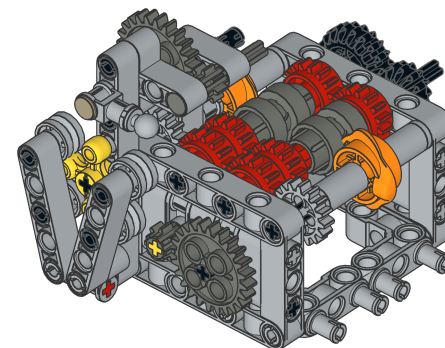
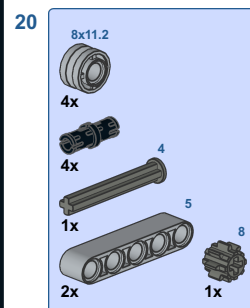
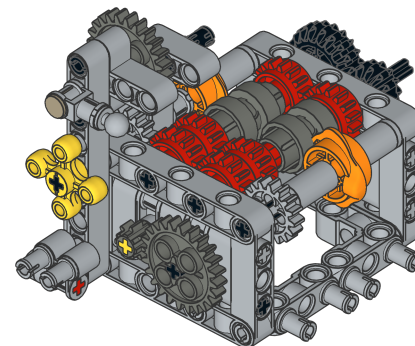
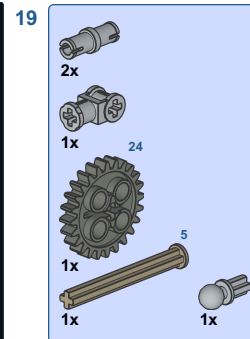
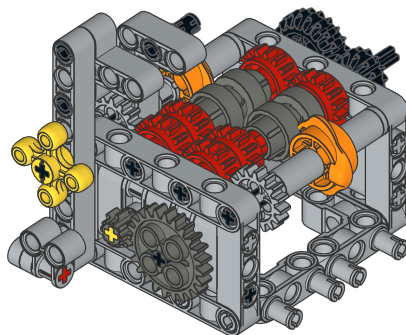
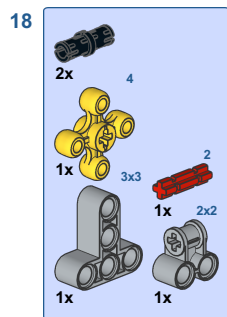
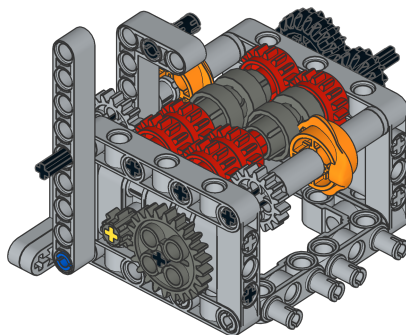
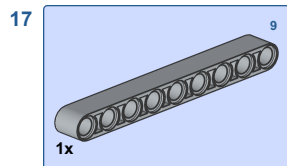
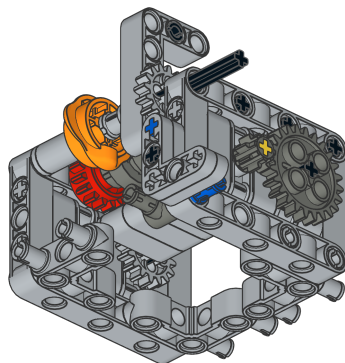
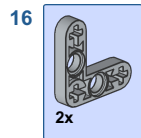


14

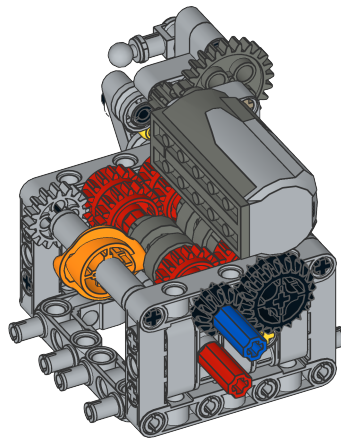
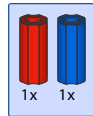


15





22



Blue axle joiner marks the transmission's input. Red axle joiner marks the transmission's output.

Both input and output are two-sided: you can use them on either side of the transmission (that means, also on the side that is "north" in the picture above).

Important: remember to mount something on the pins on the transmission's sides (west and east on the picture above) so that the transmission is braced and the two 5x7 frames are kept together.